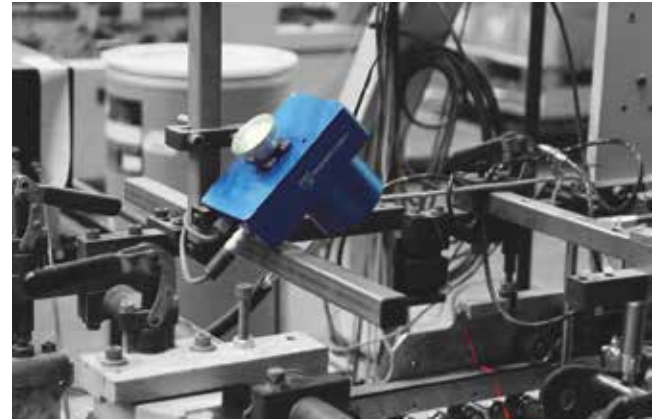




LASERCHEK

How it Works

- A laser line is projected onto the carton
- The carton with the laser line on it is imaged by the camera
- Discontinuities in the projected laser line are identified in the image and measured
- The discontinuities indicate whether folds, flaps, knock-outs and other carton features are correctly formed
- Cartons with improper features are recorded in the database, marked and/or ejected

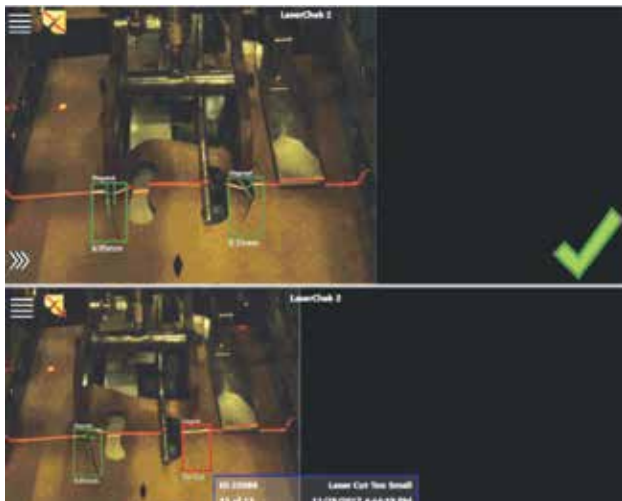


Benefits

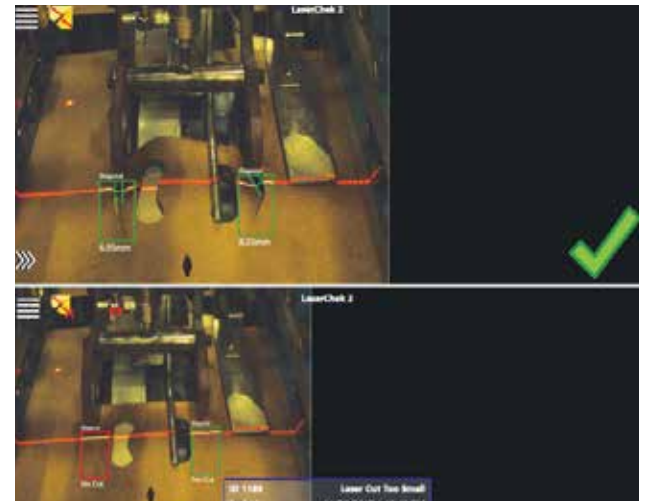
- Automatic Learn Function
- LaserChek Full Validation with Measurements

Use LaserChek to:

- Check perforations, cut outs, tip-on (placement), die cuts or any point that requires a measurement or validation in-line
- Real time reassurance that 4 and 6 pack carrier handles are punched or knocked out every time.
- Inspect fold presence and quality including double folds



Ensuring panel separation



Familiar ClearVision interface

THE PERFECT CARTON™

