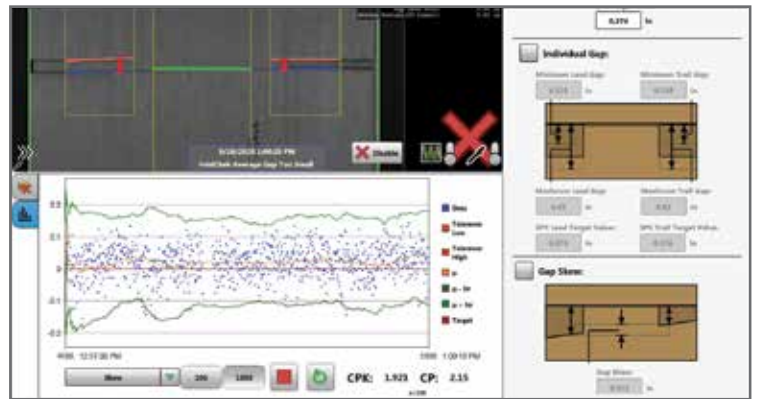




FOLDCHÉK

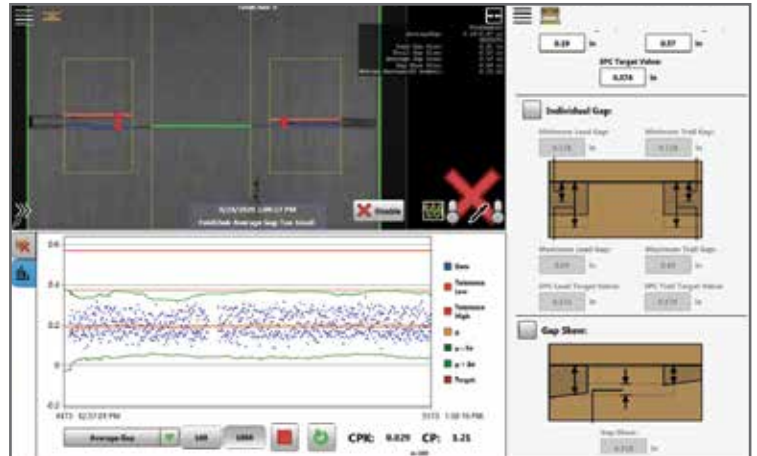
How it Works

FoldChek™ takes a picture of every manufacturer's gap. It analyzes the image and measures lead and trail gap, skew, detects flap misfold and glue squeeze out on kraft boxes. FoldChek sounds an alarm, marks the defective box and saves an image of the defect.



Benefits

The primary benefit of FoldChek is to observe the folding trends, particularly, the average of the lead and trail gaps. This shows the operators real-time gap results in an SPC-chart format and allows them to adjust the machine to the proper desired gap width so that natural gap variations are less likely to be out of specification. They even have access to live Cp and Cpk values which can be used to assess performance during an order. Drive gaps to target values by giving instantaneous feedback of machine folding results.



For more information, visit valcomelton.com or contact your local Valco Melton representative.

World Headquarters: Cincinnati, OH, USA (Corporate Offices) • Tel:+1.513.874.6550 • info@valcomelton.com

Europe Headquarters: Orkoien, Spain • Tel:+34.948.321.580

Asia Headquarters: Xiamen, Fujian, China • Tel:+86.592.591.7854